

Products /  **CASTALDI** / TELLUX D44 / D44 TELLUX/F1 / D44K/F1-LWW-AL

TELLUX D44 D44K/F1-LWW-AL

TECHNICAL DATA

GENERAL



Item code	D44K/F1-LWW-AL
Place installation	outdoor
Name	D44 TELLUX/F1 / D44K/F1-LWW-AL ground recessed
Note	5000K on request.
Standard colour	AL - aluminium grey (similar to RAL 7040)
Variant colour	GR - graphite satin finish (similar to RAL 7022)
Environments	façades and architectural works, wellness, hallway, conference hall, places of worship



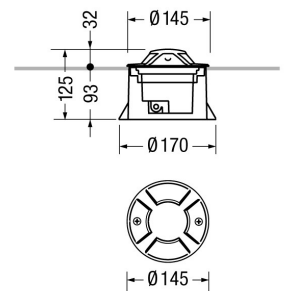
PHYSICAL

Installation type	ground recessed
Mounting type	with rough-in housing
Mounting note	On normally inflammable surfaces allowed.
Painting	Polyester powder coating, with a pluri-processed against corrosion (passed the exposure of over 1500 hours in a saline mist environment).
Screws	AISI 304 stainless steel screws.
Seals	Silicone Rubber.
Temperature glass	40°C
Static load	2000Kg
Body	Corrosion resistant die-cast aluminium body and dome.



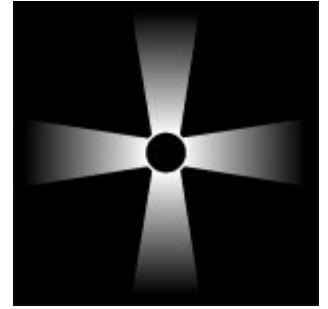
DIMENSIONS

D: Total diameter device (mm)	145
Built-in shaped	Round



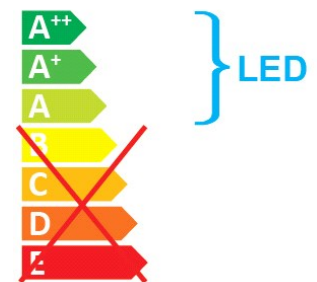
OPTICAL SYSTEMS

Opening beam **diffused**
Diffuser **Unbreakable UV-resistant polycarbonate.**



ENERGY SAVING

This luminaire contains built-in LED lamps
The lamps cannot be changed in the luminaire



SOURCES

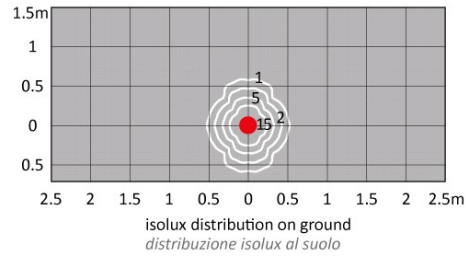
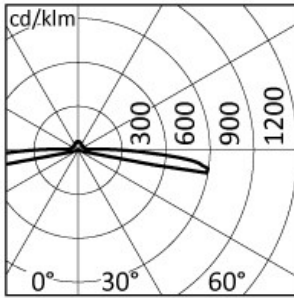
Source Type	Source Power	System Power	Source	Lamp Socket	Sources Temperature Colour	Nominal Flux	Output Flux	Source description
LED	4x1W	-	LED	-	3000K	376 lm	49 lm	-

ELECTRICAL

Ballast type **Electronic**
Mounting ballast type **Integral**
Line input **Pre-wired and tested with resin sealed watertight H07RN-F - H05RN-F (tellux/F1 model) cable (for a fast and secure connection to the main power line, use ACS/CR1 connector or similar).**

Voltage **220-240V**
Frequency **50-60Hz**

PHOTOMETRICS



NORMS / DIRECTIVES

Norms	EN 60598-1, EN 60598-2-13
Directives	2014/35/UE, 2014/30/UE

ACCESSORIES

INCLUDED ACCESSORIES

Rough-in housing

Ground and Wall rough-in housing box, high impact resistant composite technopolymer (Code PT0719).



OPTIONAL ACCESSORIES

Electrical

Accessory code ACS/CR1

Technical description
Fast IP68 connector 1bar (10m-1h) for cable Ø7-12mm - 3x1.5mm.



Accessory code ACS/CR6

Technical description
4 ways IP68 wiring box for cable Ø5-14mm - 3x1,5mm.

